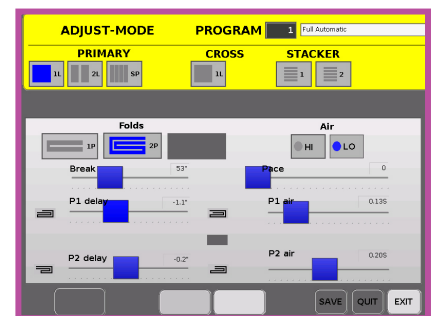
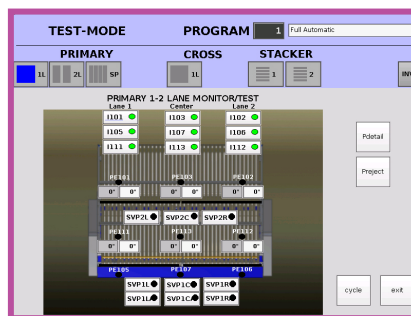
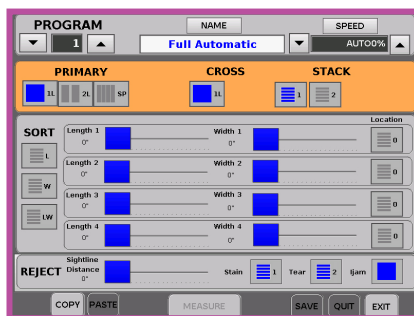
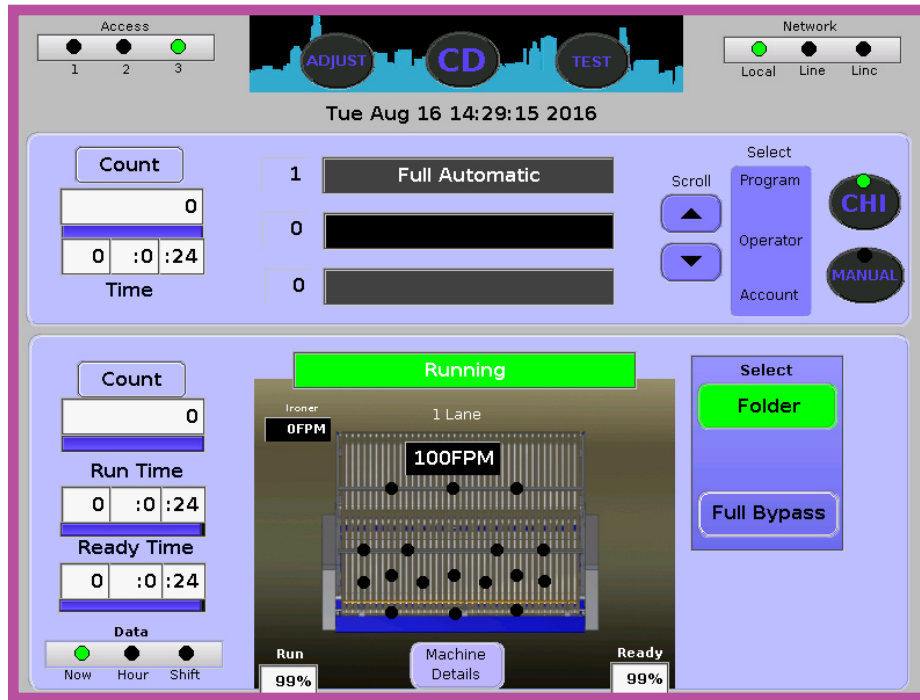




# CHI•TOUCH



## CHI•Touch – The Most Advanced, Informative, and Easy to Use Flatwork Finishing Equipment Control in the Industry

Chicago's in-house design team has created CHI•Touch, the most exciting advance in finishing equipment control technology. Available on many models in our automated laundry equipment line, all the traditional CHI features and functions such as automatic operation, self-testing, fault display and built-in diagnostics are incorporated into an even faster PC-based color touch screen control. CHI•Touch's advanced open architecture merges CHI's familiar simple intuitive control sequences with the latest technology to meet the needs of progressive laundry operators today and tomorrow.

Designed to meet the rigors of rugged laundry environments, the new CHI•Touch platform offers better visualization of functions for operators, floor management, and service teams. Its touch control graphical interface has the flexibility to work with current and future reporting and networking technology, while maintaining CHI's field-proven flexibility to work in any laundry's environment. Most importantly, it is the easiest touch control system in the industry for operators to learn and work with every day.

# CHI•TOUCH

## Key Features

Designed by Chicago's in-house IT group who have hands-on laundry expertise—not outside vendors lacking the necessary laundry knowledge at ground level to respond quickly to changing customer needs.

Multiple access levels designated for specific laundry employee categories. Each category has its own level of access and control over programming, adjustment, diagnostic, testing screens and password management to maintain a consistent and sensible security level.

Individual counters by item, hour, shift, day, and total. Production can be recorded in an almost unlimited number of ways by all relevant time and operator parameters.

Color coded on-screen pacing indicators, based on user defined standards, provide at-a-glance real time indication of machine and operator efficiency.

## Programs

- On screen ability to easily add custom item and operator names via built-in virtual keyboard.
- Auto-Tune (Patent pending) for first time item set up. Using this feature, the machine teaches itself to fold an item based on required folds by measuring to check the accuracy of those folds and progressively correcting the program until desired accuracy is achieved.

## Adjustments

- On screen arrows on illustration of folded piece indicate which way the fold moves during set-up as it is adjusted so the person performing the adjustments is always sure in which direction he is adjusting the fold.
- Slide bar adjustments can be dragged for broad adjustments and tapped for minute ones – as accurate as a delay of 1/10 inch or an air pulse of 1/100 second.
- Copy/Paste function: If user has similar size items: one item can be set up, then the adjustments for this new program can be copied and fine tuned.
- Default settings – after all items have been programmed during installation, the user can save programs/names/adjustments to a default memory file that can be recalled, if needed.

## “Touch and Test” Diagnostics

- On-screen motion flow diagram of machine while in operation shows locations and functioning of sensors, actuators and conveyors providing real time feedback.
- Measuring data is shown in inches and fractions of inches on screen to allow easier troubleshooting.
- Inverter communication network allows on-site programming of a new “off the shelf” inverter drive at the machine by constantly monitoring parameters. This system also presents real time monitoring of running frequencies and currents without requiring machine end frames to be open.

## Real Time Machine Information:

- Stores last 50 fault records with timestamp.
- Machine schematics available on screen to service personnel.
- Sensor/actuator/conveyor indicators track the actual real time progress of an item as it moves through the machine.
- Inverter communication shows running direction/frequency/current of the motor.

Visit Chicago's website [www.chidry.com](http://www.chidry.com) for easy access to the latest floorplans, technical specifications, etc.

## A Complete Range of Separating, Feeding, Ironing, Folding, and Sorting Options

Because Chicago specializes only in flatwork finishing equipment, it can offer the world's widest range of high production separating, feeding, ironing, folding and sorting equipment. Complete flatwork finishing systems range from automated multi-roll systems producing over 2000 pounds per hour, to compact ironers for small on-premise laundries.

Chicago's performance record is unmatched in tens of thousands of installations in commercial, hospitality, health care, textile rental, and institutional laundries. An experienced Chicago professional will be pleased to make an objective equipment recommendation based on your

production, space, utility and budget requirements. All equipment is designed and built in Chicago for complete quality control and prompt service and parts availability, including overnight delivery if necessary.

Contact your local Chicago distributor or the factory sales assistance office for a no-obligation analysis of your needs. Visit our newly redesigned and now mobile-friendly website [www.chidry.com](http://www.chidry.com) for easy access to current product brochures, detailed floor plans, and specifications, as well as videos of select Chicago products in action.



**CHICAGO DRYER COMPANY**  
2200 North Pulaski Road  
Chicago, Illinois 60639-3737 USA

Phone • 773.235.4430  
Fax • 773.235.4439  
Web • [www.chidry.com](http://www.chidry.com)  
Email • [chicago@chidry.com](mailto:chicago@chidry.com)

Patented and patent pending

Bulletin #7559