

## TUMBLE DRYERS

**MTD-100-MP-PLUS**  
**MTD-135-MP-PLUS**  
**MTD-180-MP-PLUS**

### FEATURES

- Construction in grey skinplate, stainless steel look.
- Big loading door (opening of 180°).
- Transmission by pulley and belt, with inverter.
- Front subjection by 2 strong and high-resistant wheels.
- AIR RE-CYCLE: Air recovery system for great energy efficiency.
- SMART DRY: The intelligent humidity sensor offers a precise control of the moisture in the linen. By this system the drying cycle will automatically stop when it reaches the set level of residual moisture.
- INSULATED PANELS: The complete circuit of the air-flow has been thermally insulated in order to optimize the energy to heat the air and to maximize the energy efficiency. Double doorglass.
- FULL FLOW: The range of MTD-MP-PLUS dryers complements the axial-radial air flow with side and front openings to increase and optimize the airflow circuit, achieving the most efficient drying conditions.
- FIRE EXTINGUISHER: Integrated Fire Extinguishing System.
- ELECTRONIC CONTROL: Easy and intuitive to use, the electronic control offers a complete control of the process.
- REVERSE DRUM: All models offer the reverse turning of the drum.
- STAINLESS STEEL DRUM standard.
- GENTLE DRY: The new drum with stamped holes makes sure the linen is gently handled.
- New filter drawer with wide surface and improved airflow.
- Cool Down: Anti-wrinkle at the end of cycle.
- Models available in electric, gas or steam heating.

### OPTIONS

- Stainless steel body.
- Stainless steel front panel.
- Low pressure steam battery.
- Model versions in 60 Hz.
- Marine versions 440V III 50/60 Hz No neutral or 480V III 50/60 Hz No neutral.



AIR RE-CYCLE



REVERSE DRUM



SMART DRY



GENTLE DRY



FULL FLOW



AXIRAD AIR FLOW



FIRE EXTINGUISHER

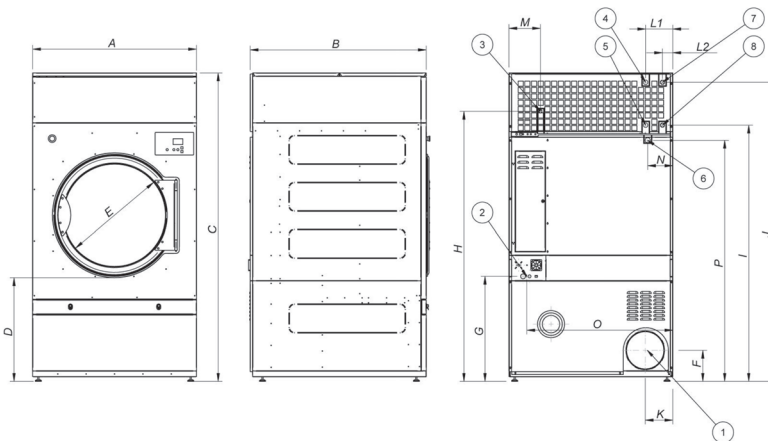


STAINLESS STEEL DRUM



ELECTRONIC CONTROL

TECHNICAL DATA	UNIT.	MTD-100-MP-PLUS	MTD-135-MP-PLUS	MTD-180-MP-PLUS			
<b>CAPACITY</b>							
Capacity	lb	100	135	180			
Capacity	kg	50	60	80			
Hourly Output	Kg/h	117	156	195			
Evaporation capacity	l/h	60,6	81,2	99,7			
<b>DRUM</b>							
Ø Drum	mm	1.225	1.225	1.225			
Ø Door	mm	802	802	802			
Door center height	mm	1.275	1.275	1.275			
Load hole bottom height	mm	874	874	874			
Drum length	mm	760	1.020	1.252			
Drum volume	l	896	1.202	1.500			
<b>POWER</b>							
Drum motor power	Kw	0,75	1,1	1,5			
Fan Motor Power	Kw	2,2	2,2	2,2			
Total Installed power	Kw	57	75,35	75,75			
Electric Heating (Installed power)	Kw	54	72	72			
Gas heating (installed Power) in KW	Kw	60	90	120			
Gas heating (installed el. power)	Kw	3	3,35	3,75			
Steam heating (Steam Power KW)	Kw	91,3	128	128			
Steam heating (installed el. power)	Kw	3	3,35	3,75			
<b>CONNECTIONS</b>							
		<b>ELECTRICAL</b>	<b>STEAM / GAS</b>	<b>ELECTRICAL</b>	<b>STEAM / GAS</b>	<b>ELECTRICAL</b>	<b>STEAM / GAS</b>
Tension 230V - I + T	Nº x mm2 / A	-	-	-	-	-	-
Tension 230V - III + T	Nº x mm2 / A	-	4 x 1,5 / 20A	-	4 x 1,5 / 32A	-	4 x 1,5 / 32A
Tension 400V - III + N + T	Nº x mm2 / A	5 x 35 / 100A	5 x 1,5 / 20A	5 x 50 / 125A	5 x 1,5 / 32A	5 x 50 / 125A	5 x 1,5 / 32A
Ø Gas inlet	BSP	3/4"		3/4"		3/4"	
Ø Steam inlet	BSP	1"		1"		1"	
Ø Condensed (Steam models)	BSP	1"		1"		1"	
<b>DIMENSIONS / PACKING DIMENSIONS</b>							
Width / Width	mm	1.270/1.330		1.270/1.330		1.270/1.330	
Depth / Depth	mm	1.085/1.185		1.345/1.445		1.577/1.677	
Height / Height	mm	2.380/2.085		2.380/2.085		2.380/2.085	
Height without heating battery	mm	1.950		1.950		1.950	
Net weight / Gross weight	Kg	395/430		529/575		657/715	
<b>OTHERS</b>							
Max airflow	m3/h	4.500		4.500		4.500	
Ø Fume exhaust	mm	300		300		300	
Sound level	dB	67		67		67	



- 01. Fumes outlet
- 02. Electrical connection
- 03. Gas connection
- 04. Steam connection 100-lb
- 05. Condensation outlet 100 lb
- 06. Anti fire water valve
- 07. Steam connection 135-180 lb
- 08. Condensation outlet 135-180 lb

	A	B	C	D	E	F	G	H	I	J	K	L1	L2	M	N	O	P
MTD-100	1.270	1.085	2.380	813	802	240	813	2.088	1.981	2.314	214	211	-	244	195	1.132	1.865
MTD-135	1.270	1.345	2.380	813	802	240	813	2.088	1.981	2.314	214	-	80	244	195	1.132	1.865
MTD-180	1.270	1.577	2.380	813	802	240	813	2.088	1.981	2.314	214	-	80	244	195	1.132	1.865

4317 E. Genesee Street Suite 100 DeWitt, New York 13214 USA  
 Phone: 315 446-2180 Fax: 315-446-2431  
 E-mail: sales@maxico.com

